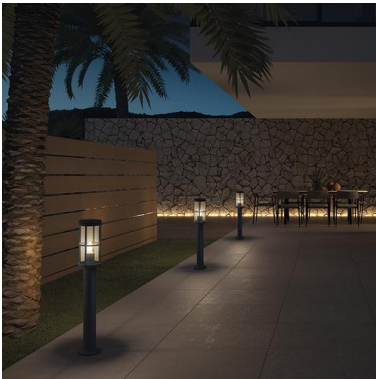
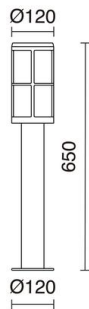


LUG 1015C-G05X1A-01

Bollard LUG IP54 E27 18W 650mm White

The Lug family is a family of luminaires available in wall light version and in two beacon heights (350mm and 650mm). All models are manufactured in aluminum and are offered at white and anthracite finishes. Its modernized classic aesthetics allows you to be an ideal solution for any residential space.



GENERAL DATA

Category	Bollards and columns
Family	Lug
Finish	[01] White
Location	Outdoor
Installation	Floor
Body material	Aluminum
Diffuser material	Metacrilato Fume
EAN	8433264158910

LIGHT SOURCES AND BEAMS

Sources	E27 LED Bulb 18W max.
Lamp included	No

TECHNICAL DATA

Dimensions	Height x Diameter (mm): 650 x 120
IP	IP54
Protection class	Class I
Frequency	50/60 Hz
Input voltage	110-240V AC V
Weight	2.0 Kg

LUG 1015C-G05X1A-01

Bollard LUG IP54 E27 18W 650mm White

PRODUCTS OF THE SAME FAMILY



Lug H350



Lug Wall