

SINCE 1978



LEADING LIGHT

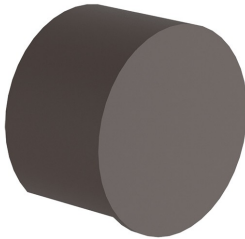
Product Datasheet

vkleadinglight.gr

Pit

VK/02298/WA/RB/WW

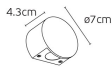
Rust Brown. 2700K. 3W. 130lm. AC85-265V DC2-4V 600mA. LED Bridgelux. 50.000hrs. Diffuse Light. Dimmable No. -20°C→ 45°C. Outdoor wall. CRI>90. Aluminum. IP65



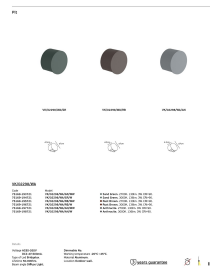
IP65



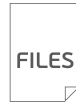
Dimensions



Gallery





Downloads




VK Leading Light

Since 1978

Technical Specifications	
Kelvin	2700K
Power	3W
Voltage	AC85-265V
Extra	DC2-4V 600mA
Fitting	Outdoor Wall
Type	Light
Safety class	
Light source	Bridgelux
IP Rating	IP65
CRI	CRI>90
Dimmable	
Lifetime	50.000hrs
Working temperature	-20°C-45°C
PAGE	302 New Products 2026
NICKNAME	Pit

Physical Specifications	
Family	Pit
Color	Rust brown
Material	Aluminum
Width	ø7cm
Length	ø7cm
Height	4.3cm

Illumination Data	
Lumen	130lm
Beam angle	Diffuse light
Lighting direction	

Packing Info	
Pcs/carton	30pcs

Certification & Warranty

Guarantee	3 years
-----------	---------

Energy Label

The image shows an energy label for a VK Leading Light. At the top left is the European Union flag and the word "ENERGY" with a lightning bolt icon. Below this, the text "VK LEADING LIGHT" and "VK/02298/WA/RB/WW" is printed. The main part of the label is a vertical scale of seven colored arrows pointing to the right, labeled A through G. The arrow for 'F' is highlighted with a black arrow pointing to it from the right. Below the scale, the energy consumption is listed as "2 kWh/1000h". To the right of this text is a QR code and the date "2019/2015".