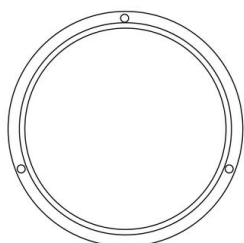
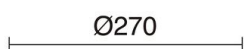


PLAFF 240E-G05X1A-02

Wall Bracket PLAFF IP65 E27 42W Black



Plaff family of wall lights is made of thermoplastic with IP65, available in black and white, with or without cape and in two oval and round shapes. This luminaire is suitable for installations in environments with a saline atmosphere and for illuminating busy outdoor areas.

GENERAL DATA

Category	Surface
Family	Plaff
Finish	[02] Black
Location	Outdoor
Installation	Ceiling, Wall
Body material	Thermoplastic
Diffuser material	Opal polycarbonate
Frame material	Thermoplastic
ETIM class	EC0028g2
EAN	8433264118747

LIGHT SOURCES AND BEAMS

Sources	E27 LED Bulb/TC-TSE/HAL 42W max.
Lamp included	No
Beam	Semi-direct

TECHNICAL DATA

Dimensions	Diameter x Width (mm): 270 x 91
IP	IP65
IK	10
Corrosion resistance	Yes
Protection class	Class II
Frequency	50/60 Hz
Input voltage	110-240V AC V
Auxiliary gear	Without equipment, not needed
Weight	1.0 Kg
Cable outlets	1
ECORAE category I	CAT-B
ECORAE I	0.5

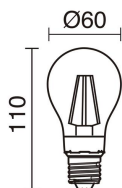
NOTES

Luminaire suitable for installation in environments with saline atmosphere

PLAFF 240E-G05X1A-02

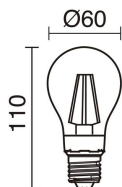
Wall Bracket PLAFF IP65 E27 42W Black

RECOMMENDED ACCESSORIES



632C-L0506B-01
Lamp LED FILAMENT E27 LED
Bulb 6W 800lm CRI80 2700K 360°

Input voltage	110-240V AC
Frequency	50/60
Wattage (W)	6.0
IP	IP20
Protection class	Class I



632C-L0506B-02
Lamp LED FILAMENT E27 LED
Bulb 6W 800lm 4000K 360°

Input voltage	110-240V AC
Frequency	50/60
Wattage (W)	6.0
IP	IP20
Protection class	Class I

PLAFF 240E-G05X1A-02

Wall Bracket PLAFF IP65 E27 42W Black

PRODUCTS OF THE SAME FAMILY



Plaff M Oval



Plaff Round Hood



Plaff S Oval



Plaff S Oval hood