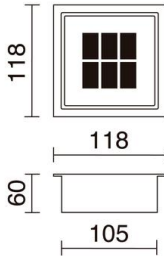


UTU MINI 338A-L02X1K-29 Recessed floor UTU MINI IP68 LED SMD 0.33W CRI80 Transparent

Family of solar wall lights Utu mini is made of polycarbonate with IP68, in a square shape, available in two versions: LED SMD and LED SMD AMBER. It is installed on the ground. It is recommended to illuminate the passage areas of large outdoor surfaces.



GENERAL DATA

Category	Recessed
Family	Utu mini
Finish	[2g] Transparent
Location	Outdoor
Installation	Floor
Body material	Polycarbonate
Diffuser material	Transparent polycarbonate
ETIM class	EC000347
EAN	8435256541571

LIGHT SOURCES AND BEAMS

Sources	LED SMD 0,325W CRI80
Total flux	0 lm
Beam	Diffuse

TECHNICAL DATA

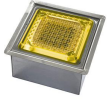
Dimensions	Width x Height x Depth (mm): 118 x 118 x 61
IP	IP68
IK	10
Dinamic pressure	3,500.0 Kg
Protection class	Class III
Input voltage	3.15V DC V
Output current	7 mA
Battery charge time	3.0 h
Battery autonomy	12.0 h
Surface temperature	-40.0 °C
Operating temperature range	70 °C
Lifetime	50,000 h
LED lifetime L	80
LED lifetime B	20
Weight	0.82 Kg
ECORAE category I	LED-B

NOTES

Loading time: 3/8h
Full load duration: 18h
Sensor level: 150/350 lux
Thermal amplitude: -25° +60 °C
Luminaire suitable for installation in environments with saline atmosphere

UTU MINI 338A-L02X1K-29 Recessed floor UTU MINI IP68 LED SMD 0.33W CRI80 Transparent

PRODUCTS OF THE SAME FAMILY



Utu Mini Ambar