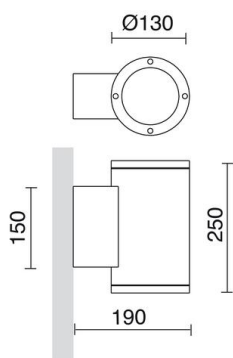


SETH 399C-L0218B-90 Wall Bracket SETH Round IP65 LED SMD AC 17.60W 2270lm CRI80 4000K
Brown oxide



Seth family of wall lights is made of aluminum with IP65, available in various sizes and in two colors: anthracite and brown. You can choose between two types of emission below and above and below. It is suitable for illuminating outdoor residential and commercial areas.

GENERAL DATA

Category	Surface
Family	Seth
Finish	[90] Brown oxide
Location	Outdoor
Installation	Wall
Body material	Aluminum
Diffuser material	Transparent glass
ETIM class	EC0028g2
EAN	8433264120283

LIGHT SOURCES AND BEAMS

Sources	LED SMD AC 17.6W 2270lm 4000K CRI80
Energy efficiency	E
Beam	Direct symmetric

TECHNICAL DATA

Dimensions	Height x Diameter x Length (mm): 250 x 130 x 190
IP	IP65
Corrosion resistance	Yes
Protection class	Class I
Frequency	50/60 Hz
Input voltage	220-240V AC V
Auxiliary gear	Electronic
Lifetime	50,000 h
LED lifetime L	80
LED lifetime B	20
Weight	2.65 Kg
Cable outlets	1
ECORAE category I	LED-B
ECORAE I	0.5



SETH 399C-L0218B-90 Wall Bracket SETH Round IP65 LED SMD AC 17.60W 2270lm CRI80 4000K
Brown oxide

PRODUCTS OF THE SAME FAMILY



Seth Round Ceiling



Seth Round D130 Up-down



Seth Round D93 Down



Seth Round D93 Up-down



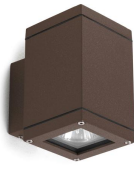
Seth Square Ceiling



Seth Square L100 Down



Seth Square L100 Up-down



Seth Square L80 Down



Seth Square L80 Up-down