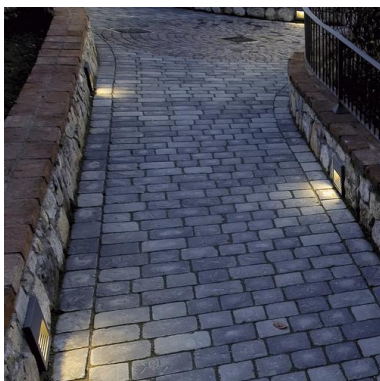
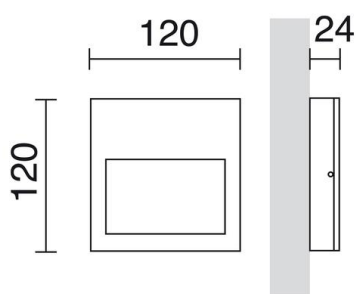


SLIM 580A-L0104B-04

Asymmetric Wall Bracket SLIM IP65 LED SMD 3W 367lm CRI90 3000K 77°
Anthracite



Slim family of wall lights is made of aluminum in a square shape with IP65, available in two colors gray and anthracite and in two sizes. It emits the light in 3000K color temperature. It is suitable for lighting outdoor busy areas.

GENERAL DATA

Category	Surface
Family	Slim
Finish	[04] Anthracite
Location	Outdoor
Installation	Wall
Body material	Aluminum
Diffuser material	Frosted glass
Frame material	Aluminum
ETIM class	EC000481
EAN	8435256523478

LIGHT SOURCES AND BEAMS

Sources	LED SMD 3W max. 367lm 3000K CRI90
Energy efficiency	E
Beam	77° - Direct asymmetric

TECHNICAL DATA

Dimensions	Height x Width x Length (mm): 120 x 120 x 25
IP	IP65
IK	09
Corrosion resistance	Yes
Protection class	Class I
Frequency	50/60 Hz
Input voltage	220-240V AC V
Output current	500 mA
Auxiliary gear	Electronic
Surface temperature	30.0 °C
Operating temperature range	-20 - 35 °C
Lifetime	60,000 h
LED lifetime L	80
LED lifetime B	10
Weight	0.5 Kg
Cable outlets	1
ECORAE category I	LED-B
ECORAE I	0.25

SLIM 580A-L0104B-04 Asymmetric Wall Bracket SLIM IP65 LED SMD 3W 367lm CRI90 3000K 77° Anthracite

PRODUCTS OF THE SAME FAMILY



580B-L0210B



580D-L0110B



580D-L0210B



Slim Round Reces M



Slim Round Reces S



Slim Round Surf S



Slim Square Reces M



Slim Square Reces S



Slim Square Surf M