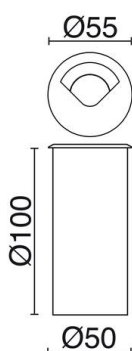


PUSSA 654D-L0204F-03 Recessed floor 1 emission PUSSA IP67 LED SMD 4W 370lm CRI80 4000K Grey



The Pussa family of ground recesses, made of aluminum with a degree of protection IP67, available in three versions, single emission, double emission and standard, also in two different sizes. The embedment depth is 10cm. They are recessed designed to illuminate walkways.

GENERAL DATA

| | |
|-------------------|--|
| Category | Recessed |
| Family | Pussa |
| Finish | [03] Grey |
| Location | Outdoor |
| Installation | Floor |
| Body material | Aluminum |
| Diffuser material | Transparent glass, Prismatic polycarbonate |
| Frame material | Aluminum |
| ETIM class | EC000758 |
| EAN | 8435256543674 |

LIGHT SOURCES AND BEAMS

| | |
|-------------------|-----------------------------------|
| Sources | LED SMD 4W max. 370lm 4000K CRI80 |
| Energy efficiency | F |
| Beam | Indirect asymmetric |

TECHNICAL DATA

| | |
|---------------------------|---------------------------------|
| Dimensions | Diameter (mm): 55 |
| IP | IP67 |
| IK | 10 |
| Dinamic pressure | 2,000.0 Kg / 30.0 Km/h |
| Corrosion resistance | Yes |
| Protection class | Class III |
| Auxiliary gear | Without equipment, needed |
| Auxiliary equipment brand | Meanwell |
| Surface temperature | 70.0 °C |
| Lifetime | 25,000 h |
| LED lifetime L | 80 |
| LED lifetime B | 20 |
| Weight | 0.35 Kg |
| Cable outlets | 1 |
| Cut hole box included | Yes |
| Cut hole dimensions | Diameter x Depth (mm): 50 x 100 |
| ECORAE category I | LED-A |
| ECORAE I | 0.25 |

PUSSA

 654D-L0204F-03 Recessed floor 1 emission PUSSA IP67 LED SMD 4W 370lm CRI80 4000K
Grey**RECOMMENDED ACCESSORIES****B02A-X3317H-01**

Power supplies ALIMENTADORES

White

| | |
|---------------------|-------------|
| Input voltage | 110-240V AC |
| Frequency | 50/60 |
| Output current (mA) | 350 |
| Wattage (W) | 17.0 |
| IP | IP20 |
| Protection class | Class II |

PUSSA 654D-L0204F-03 Recessed floor 1 emission PUSSA IP67 LED SMD 4W 370lm CRI80 4000K
Grey

PRODUCTS OF THE SAME FAMILY



Pussa D25



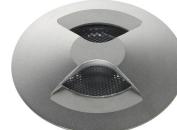
Pussa D25 1
beam



Pussa D25 2
beams



Pussa D55



Pussa D55 2 beams