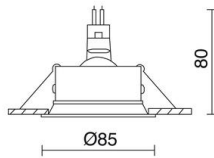


LEDA 752A-G42X1B-02

Recessed ceiling LEDA GU10 50W 10° Black



The LEDA family consists of recessed and adjusted with a low degree of glare to be the source of the delayed light to the surface of the roof. This luminaire is ideal for providing a LED lighting in living areas, hotel rooms, hallways. In addition, this family of LED recessed stand out for their adjustability.

GENERAL DATA

Category	Recessed
Family	Leda
Finish	[o2] Black
Location	Indoor
Installation	Ceilling
Body material	Aluminum
Frame material	Aluminum
ETIM class	EC001744
EAN	8433264088378

LIGHT SOURCES AND BEAMS

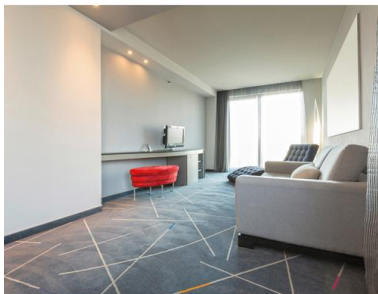
Sources	GU10 QPAR-16 50W max.
Lamp included	No
Beam	Direct symmetric

TECHNICAL DATA

Dimensions	Height x Width x Length (mm): 85 x 85 x 80
IP	IP20
Protection class	Class II
Frequency	50/60 Hz
Input voltage	110-240V AC V
Auxiliary gear	Without equipment, not needed
Weight	0.157 Kg
Tilt angle	10.0 °
Cut hole dimensions	Diameter (mm): 76
ECORAE category I	CAT-A

NOTES

Orientable



LEDA 752A-G42X1B-02

Recessed ceiling LEDA GU10 50W 10° Black

RECOMMENDED ACCESSORIES

		B02T-X3360D-02 Power supplies ACCESORIOS Black	<table border="1"> <tr><td>Input voltage</td><td>220-240V AC</td></tr> <tr><td>Frequency</td><td>50/60</td></tr> <tr><td>Wattage (W)</td><td>60.0</td></tr> <tr><td>IP</td><td>IP20</td></tr> </table>	Input voltage	220-240V AC	Frequency	50/60	Wattage (W)	60.0	IP	IP20				
Input voltage	220-240V AC														
Frequency	50/60														
Wattage (W)	60.0														
IP	IP20														
		B02T-X3370D-02 Power supplies ACCESORIOS Black	<table border="1"> <tr><td>Input voltage</td><td>220-240V AC</td></tr> <tr><td>Frequency</td><td>50/60</td></tr> <tr><td>Wattage (W)</td><td>50.0</td></tr> <tr><td>IP</td><td>IP20</td></tr> </table>	Input voltage	220-240V AC	Frequency	50/60	Wattage (W)	50.0	IP	IP20				
Input voltage	220-240V AC														
Frequency	50/60														
Wattage (W)	50.0														
IP	IP20														
		578A-L2105A-02 Lamp LED PRO GU10 LED Bulb 4.50W 300lm CRI80 4000K 38° White	<table border="1"> <tr><td>Input voltage</td><td>110-240V AC</td></tr> <tr><td>Frequency</td><td>50/60</td></tr> <tr><td>Wattage (W)</td><td>4.5</td></tr> <tr><td>IP</td><td>IP20</td></tr> <tr><td>Protection class</td><td>Class I</td></tr> </table>	Input voltage	110-240V AC	Frequency	50/60	Wattage (W)	4.5	IP	IP20	Protection class	Class I		
Input voltage	110-240V AC														
Frequency	50/60														
Wattage (W)	4.5														
IP	IP20														
Protection class	Class I														
		578A-L2104A-01 Lamp LED PRO GU10 3.50W 36° White	<table border="1"> <tr><td>Input voltage</td><td>110-240V AC</td></tr> <tr><td>Frequency</td><td>50/60</td></tr> <tr><td>Wattage (W)</td><td>3.5</td></tr> <tr><td>IP</td><td>IP20</td></tr> <tr><td>Protection class</td><td>Class I</td></tr> </table>	Input voltage	110-240V AC	Frequency	50/60	Wattage (W)	3.5	IP	IP20	Protection class	Class I		
Input voltage	110-240V AC														
Frequency	50/60														
Wattage (W)	3.5														
IP	IP20														
Protection class	Class I														
		729A-L33R1B-00 Recessed ceiling ACCESORIOS 1- 10V,Push LED COB 8W 803lm CRI85 4000K 40°	<table border="1"> <tr><td>Input voltage</td><td>110-240V AC</td></tr> <tr><td>Frequency</td><td>50/60</td></tr> <tr><td>Wattage (W)</td><td>8.0</td></tr> <tr><td>IP</td><td>IP20</td></tr> <tr><td>Protection class</td><td>Class II</td></tr> <tr><td>Dimmable</td><td>1-10V, Push</td></tr> </table>	Input voltage	110-240V AC	Frequency	50/60	Wattage (W)	8.0	IP	IP20	Protection class	Class II	Dimmable	1-10V, Push
Input voltage	110-240V AC														
Frequency	50/60														
Wattage (W)	8.0														
IP	IP20														
Protection class	Class II														
Dimmable	1-10V, Push														
		578A-L2104A-02 Lamp LED PRO GU10 3.50W 36° White	<table border="1"> <tr><td>Input voltage</td><td>110-240V AC</td></tr> <tr><td>Frequency</td><td>50/60</td></tr> <tr><td>IP</td><td>IP20</td></tr> <tr><td>Protection class</td><td>Class I</td></tr> </table>	Input voltage	110-240V AC	Frequency	50/60	IP	IP20	Protection class	Class I				
Input voltage	110-240V AC														
Frequency	50/60														
IP	IP20														
Protection class	Class I														
		729A-L31R1B-00 Recessed ceiling ACCESORIOS 1- 10V,Push LED COB 8W 766lm CRI85 3000K 40°	<table border="1"> <tr><td>Input voltage</td><td>110-240V AC</td></tr> <tr><td>Frequency</td><td>50/60</td></tr> <tr><td>Wattage (W)</td><td>8.0</td></tr> <tr><td>IP</td><td>IP20</td></tr> <tr><td>Protection class</td><td>Class II</td></tr> <tr><td>Dimmable</td><td>1-10V, Push</td></tr> </table>	Input voltage	110-240V AC	Frequency	50/60	Wattage (W)	8.0	IP	IP20	Protection class	Class II	Dimmable	1-10V, Push
Input voltage	110-240V AC														
Frequency	50/60														
Wattage (W)	8.0														
IP	IP20														
Protection class	Class II														
Dimmable	1-10V, Push														

LEDA 752A-G42X1B-02

Recessed ceiling LEDA GU10 50W 10° Black



729A-L3108B-00
 Recessed ceiling ACCESORIOS
 LED COB 8W 766lm CRI85 3000K
 40°

Input voltage	220-240V AC
Frequency	50/60
Wattage (W)	8.0
IP	IP20
Protection class	Class II



729A-L3308B-00
 Recessed ceiling ACCESORIOS
 LED COB 8W 803lm CRI85 4000K
 40°

Input voltage	220-240V AC
Frequency	50/60
Wattage (W)	8.0
IP	IP20
Protection class	Class II

LEDA 752A-G42X1B-02

Recessed ceiling LEDA GU10 50W 10° Black

PRODUCTS OF THE SAME FAMILY



Leda LED