

LEDA 752A-G42X1B-03

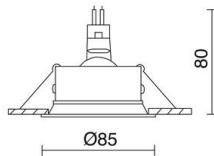
Recessed ceiling LEDA GU10 50W 10° Grey



The LEDA family consists of recessed and adjusted with a low degree of glare to be the source of the delayed light to the surface of the roof. This luminaire is ideal for providing a LED lighting in living areas, hotel rooms, hallways. In addition, this family of LED recessed stand out for their adjustability.

GENERAL DATA

Category	Recessed
Family	Leda
Finish	1031 Grey
Location	Indoor
Installation	Ceilling
Body material	Aluminum
Frame material	Aluminum
ETIM class	EC001744
EAN	8433264088385



LIGHT SOURCES AND BEAMS

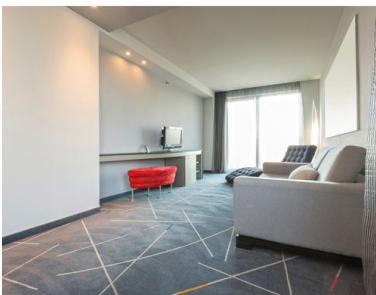
Sources	GU10 QPAR-16 50W max.
Lamp included	No
Beam	Direct symmetric

TECHNICAL DATA

Dimensions	Height x Width x Length (mm): 85 x 85 x 80
IP	IP20
Protection class	Class II
Frequency	50/60 Hz
Input voltage	110-240V AC V
Auxiliary gear	Without equipment, not needed
Weight	0.157 Kg
Tilt angle	10.0 °
Cut hole dimensions	Diameter (mm): 76
ECORAE category I	CAT-A

NOTES

Orientable



LEDA 752A-G42X1B-03

Recessed ceiling LEDA GU10 50W 10° Grey

RECOMMENDED ACCESSORIES

		B02T-X3360D-02 Power supplies ACCESORIOS Black	<table border="1"> <tr><td>Input voltage</td><td>220-240V AC</td></tr> <tr><td>Frequency</td><td>50/60</td></tr> <tr><td>Wattage (W)</td><td>60.0</td></tr> <tr><td>IP</td><td>IP20</td></tr> </table>	Input voltage	220-240V AC	Frequency	50/60	Wattage (W)	60.0	IP	IP20				
Input voltage	220-240V AC														
Frequency	50/60														
Wattage (W)	60.0														
IP	IP20														
		B02T-X3370D-02 Power supplies ACCESORIOS Black	<table border="1"> <tr><td>Input voltage</td><td>220-240V AC</td></tr> <tr><td>Frequency</td><td>50/60</td></tr> <tr><td>Wattage (W)</td><td>50.0</td></tr> <tr><td>IP</td><td>IP20</td></tr> </table>	Input voltage	220-240V AC	Frequency	50/60	Wattage (W)	50.0	IP	IP20				
Input voltage	220-240V AC														
Frequency	50/60														
Wattage (W)	50.0														
IP	IP20														
		578A-L2105A-02 Lamp LED PRO GU10 LED Bulb 4.50W 300lm CRI80 4000K 38° White	<table border="1"> <tr><td>Input voltage</td><td>110-240V AC</td></tr> <tr><td>Frequency</td><td>50/60</td></tr> <tr><td>Wattage (W)</td><td>4.5</td></tr> <tr><td>IP</td><td>IP20</td></tr> <tr><td>Protection class</td><td>Class I</td></tr> </table>	Input voltage	110-240V AC	Frequency	50/60	Wattage (W)	4.5	IP	IP20	Protection class	Class I		
Input voltage	110-240V AC														
Frequency	50/60														
Wattage (W)	4.5														
IP	IP20														
Protection class	Class I														
		578A-L2104A-01 Lamp LED PRO GU10 3.50W 36° White	<table border="1"> <tr><td>Input voltage</td><td>110-240V AC</td></tr> <tr><td>Frequency</td><td>50/60</td></tr> <tr><td>Wattage (W)</td><td>3.5</td></tr> <tr><td>IP</td><td>IP20</td></tr> <tr><td>Protection class</td><td>Class I</td></tr> </table>	Input voltage	110-240V AC	Frequency	50/60	Wattage (W)	3.5	IP	IP20	Protection class	Class I		
Input voltage	110-240V AC														
Frequency	50/60														
Wattage (W)	3.5														
IP	IP20														
Protection class	Class I														
		729A-L33R1B-00 Recessed ceiling ACCESORIOS 1- 10V,Push LED COB 8W 803lm CRI85 4000K 40°	<table border="1"> <tr><td>Input voltage</td><td>110-240V AC</td></tr> <tr><td>Frequency</td><td>50/60</td></tr> <tr><td>Wattage (W)</td><td>8.0</td></tr> <tr><td>IP</td><td>IP20</td></tr> <tr><td>Protection class</td><td>Class II</td></tr> <tr><td>Dimmable</td><td>1-10V, Push</td></tr> </table>	Input voltage	110-240V AC	Frequency	50/60	Wattage (W)	8.0	IP	IP20	Protection class	Class II	Dimmable	1-10V, Push
Input voltage	110-240V AC														
Frequency	50/60														
Wattage (W)	8.0														
IP	IP20														
Protection class	Class II														
Dimmable	1-10V, Push														
		578A-L2104A-02 Lamp LED PRO GU10 3.50W 36° White	<table border="1"> <tr><td>Input voltage</td><td>110-240V AC</td></tr> <tr><td>Frequency</td><td>50/60</td></tr> <tr><td>IP</td><td>IP20</td></tr> <tr><td>Protection class</td><td>Class I</td></tr> </table>	Input voltage	110-240V AC	Frequency	50/60	IP	IP20	Protection class	Class I				
Input voltage	110-240V AC														
Frequency	50/60														
IP	IP20														
Protection class	Class I														
		729A-L31R1B-00 Recessed ceiling ACCESORIOS 1- 10V,Push LED COB 8W 766lm CRI85 3000K 40°	<table border="1"> <tr><td>Input voltage</td><td>110-240V AC</td></tr> <tr><td>Frequency</td><td>50/60</td></tr> <tr><td>Wattage (W)</td><td>8.0</td></tr> <tr><td>IP</td><td>IP20</td></tr> <tr><td>Protection class</td><td>Class II</td></tr> <tr><td>Dimmable</td><td>1-10V, Push</td></tr> </table>	Input voltage	110-240V AC	Frequency	50/60	Wattage (W)	8.0	IP	IP20	Protection class	Class II	Dimmable	1-10V, Push
Input voltage	110-240V AC														
Frequency	50/60														
Wattage (W)	8.0														
IP	IP20														
Protection class	Class II														
Dimmable	1-10V, Push														

LEDA 752A-G42X1B-03

Recessed ceiling LEDA GU10 50W 10° Grey



729A-L3108B-00
 Recessed ceiling ACCESORIOS
 LED COB 8W 766lm CRI85 3000K
 40°

Input voltage	220-240V AC
Frequency	50/60
Wattage (W)	8.0
IP	IP20
Protection class	Class II



729A-L3308B-00
 Recessed ceiling ACCESORIOS
 LED COB 8W 803lm CRI85 4000K
 40°

Input voltage	220-240V AC
Frequency	50/60
Wattage (W)	8.0
IP	IP20
Protection class	Class II

LEDA 752A-G42X1B-03

Recessed ceiling LEDA GU10 50W 10° Grey

PRODUCTS OF THE SAME FAMILY



Leda LED