

# DUBE 796B-L3110I-02

Suspended Lamp DUBE LED COB 9.20W 1250lm CRI80 3000K 32° Black

Simplicidad, sobriedad y versatilidad estas son las características de esta colección de luminarias de suspensión que en sus diferentes combinaciones puede iluminar y decorar diferentes tipos de ambientes. De los más funcionales a aquellos que necesitan un toque de sofisticación. Existe también la versión proyector para su combinación.



## GENERAL DATA

Category	Pendant
Family	Dube
Finish	[o2] Black
Location	Indoor
Installation	Ceiling
Body material	Aluminum
Diffuser material	Transparent polycarbonate
Reflector material	Faceted aluminum
ETIM class	EC001743
EAN	8433264071332

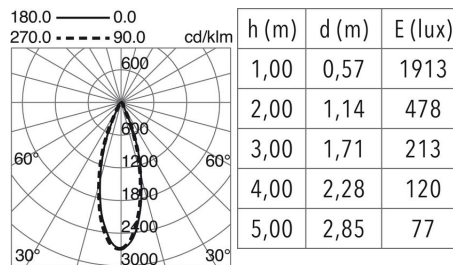
## LIGHT SOURCES AND BEAMS

Sources	LED COB 9.2W max. 1250lm 3000K CRI80
Total flux	718 lm
Energy efficiency	E
Beam	32° - Direct symmetric

## TECHNICAL DATA

Dimensions	Height x Diameter (mm): 250 x 40
IP	IP20
Protection class	Class III
Lifetime	50.000 h
LED lifetime L	80
LED lifetime B	20
Weight	0.49 Kg
ECORAAE category I	LED-A

## PHOTOMETRIC DATA

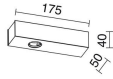
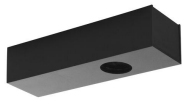


## NOTES

- \*Add bases
- \* Track not included. Consult families Carril and Track

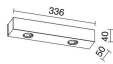
**DUBE** 796B-L3110I-02 Suspended Lamp DUBE LED COB 9.20W 1250lm CRI80 3000K 32° Black

**RECOMMENDED ACCESSORIES**



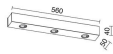
**B19A-X3310B-02**  
1 Base Controller connector DUBE  
Black

Input voltage	220-240V AC
Frequency	50/60
IP	IP20
Protection class	Class I



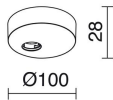
**B19B-X3340B-02**  
Driver Base 2 Connections DUBE  
Black

Input voltage	220-240V AC
Frequency	50/60
IP	IP20
Protection class	Class I



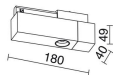
**B19C-X3330B-02**  
3 Base Controller connectors  
DUBE Black

Input voltage	220-240V AC
Frequency	50/60
IP	IP20
Protection class	Class I



**B19E-X3310B-02**  
1 Base Controller connector DUBE  
Black

Input voltage	220-240V AC
Frequency	50/60
IP	IP20
Protection class	Class I



**B19H-X3310B-02**  
1 Base Controller connector DUBE  
Black

Input voltage	220-240V AC
Frequency	50/60
IP	IP20
Protection class	Class I



**A47D-796-92**  
Softener filter DUBE Transparent  
glass

Material	Aluminum
Finish	[92] Transparent glass



**A47E-796-92**  
Extensive filter DUBE Transparent  
glass

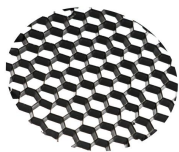
Material	Aluminum
Finish	[92] Transparent glass



**A47C-796-92**  
Extension filter DUBE Transparent  
glass

Material	Aluminum
Finish	[92] Transparent glass

**DUBE** 796B-L3110I-02 Suspended Lamp DUBE LED COB 9.20W 1250lm CRI80 3000K 32° Black



**A04M-796-02**  
Anti-blitching Grid DUBE Black

Material	Steel
Finish	[02] Black



**A55A-796-02**  
Trim DUBE Black

Material	Polycarbonate
Finish	[02] Black



**A55A-796-45**  
Trim DUBE Chrome matt

Material	Polycarbonate
Finish	[45] Chrome matt



**A55A-796-46**  
Trim DUBE Gold matt

Material	Polycarbonate
Finish	[46] Gold matt

**DUBE** 796B-L3110I-02 Suspended Lamp DUBE LED COB 9.20W 1250lm CRI80 3000K 32° Black

PRODUCTS OF THE SAME FAMILY

---



Dube W