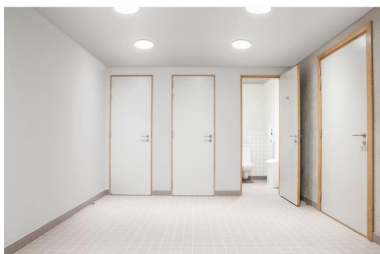
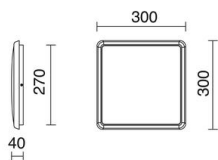


# VALGUS 806B-L31RCB-01 Ceiling Fixture VALGUS IP54 Phase cut C LED SMD 18W 1494lm CRI80 3000K 115° White

VALGUS is a family of LED lamps IP54 ceiling or wall and circular polycarbonate incorporating an adjustable version, one with built emergency, with presncia detector and a fourth with temperature selection by a conventional switch. The VALGUS soffits have also been developed in adjustable square version and is a good solution, though for porches, or areas interior passage such as corridors and hallways.



## GENERAL DATA

Category	Surface
Family	Valgus
Finish	[01] White
Location	Indoor
Installation	Ceiling
Body material	Polycarbonate
Diffuser material	Opal polycarbonate
ETIM class	EC0028g2
EAN	8433264071790

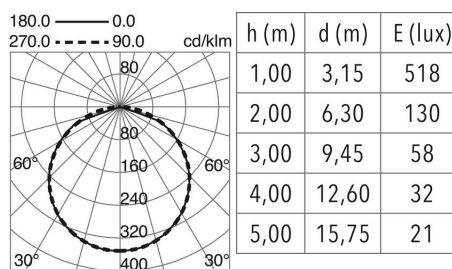
## LIGHT SOURCES AND BEAMS

Sources	LED SMD 18W 1494lm 3000K CRI80
Energy efficiency	G (3000K)
Beam	115° - Direct symmetric

## TECHNICAL DATA

Dimensions	Height x Width x Length (mm): 40 x 300 x 300
IP	IP54
Protection class	Class II
Frequency	50/60 Hz
Dimmable	Phase cut C
Input voltage	220-240V AC V
Power factor	0.9
Auxiliary gear	Electronic
Lifetime	40.000 h
LED lifetime L	80
LED lifetime B	20
Weight	1.2 Kg
ECORAE category I	LED-B

## PHOTOMETRIC DATA



# VALGUS

806B-L31RCB-01 Ceiling Fixture VALGUS IP54 Phase cut C LED SMD 18W 1494lm  
CRI80 3000K 115° White

PRODUCTS OF THE SAME FAMILY

---



Valgus Round    Valgus Round  
Emergency    Valgus Round Sensor