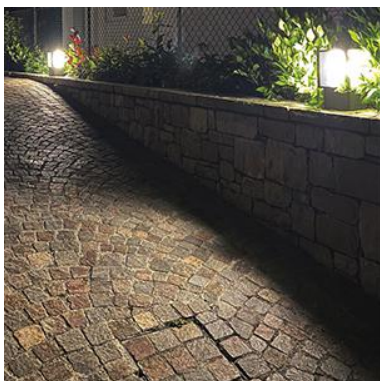
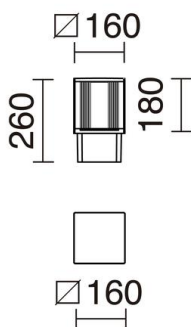


AURA 932C-L3114B-02 Bollard AURA IP65 LED SMD 14W 1760lm CRI80 3000K 120° 260mm Black



The Aura family with its three beacon models at 260mm, 400mm and 680mm tall, together with its 2000m column mode variant allows to solve any need for exterior lighting. In addition to its differential design manufactured in aluminum, it has high technical characteristics and is available in oxide and black brown colors (other finishes to consult), both at 3000K and 4000K. It is suitable for illuminating any outer space in pedestrian areas, roads, terraces, or public and private gardens.

GENERAL DATA

Category	Bollards and columns
Family	Aura
Finish	[02] Black
Location	Outdoor
Installation	Floor
Body material	Aluminum
Diffuser material	Opal polycarbonate
ETIM class	EC000301
EAN	8433264168698

LIGHT SOURCES AND BEAMS

Sources	LED SMD 14W max. 1760lm 3000K CRI80
Total flux	820 lm
Energy efficiency	E
Beams	120°

TECHNICAL DATA

Dimensions	Width x Depth x Height (mm): 160 x 160 x 260
IP	IP65
IK	08
Protection class	Class I
Frequency	50/60 Hz
Input voltage	220-240V AC V
Output current	350 mA
Power factor	0.9
Auxiliary gear	Electronic
Auxiliary equipment brand	TCI
Operating temperature range	-20 - 50 °C
Lifetime	50,000 h
LED lifetime L	80
LED lifetime B	20
Weight	9.1 Kg
Cable outlets	1
ECORAE category I	LED-C
Anchorage included	Yes
Photobiological risk group	RGo

AURA 932C-L3114B-02 Bollard AURA IP65 LED SMD 14W 1760lm CRI80 3000K 120° 260mm Black

PRODUCTS OF THE SAME FAMILY



Aura L2000



Aura L400



Aura L680