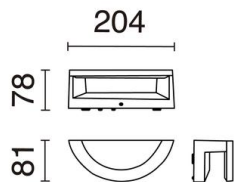
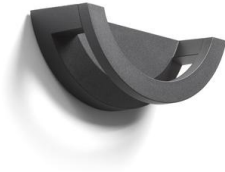


LOOP

982A-L3109A-02

Wall Bracket LOOP IP65 LED SMD 9.50W 1295lm CRI80 3000K 50° Black



Family wall light and exterior beacons, made of aluminum and black finish. With an indirect light distribution and equipped with high degrees of protection IP65 and IK08 and, it is available at two color temperatures 3000K and 4000K. The wall lamp can be installed individually or in a group to create luminal shapes and designs. The beacon is available in two heights of 500mm and 1000mm. With an attractive and modern design this family provides functional and aesthetic lighting, for any external, residential or commercial space.

GENERAL DATA

Category	Surface
Family	Loop
Finish	[02] Black
Location	Outdoor
Installation	Wall
Body material	Aluminum
Diffuser material	Opal polycarbonate
ETIM class	EC0028g2
EAN	8433264115579

LIGHT SOURCES AND BEAMS

Sources	LED SMD 9,5W max. 1295lm 3000K CRI80
Total flux	500 lm
Energy efficiency	E
Beam	50° - Indirect asymmetric

TECHNICAL DATA

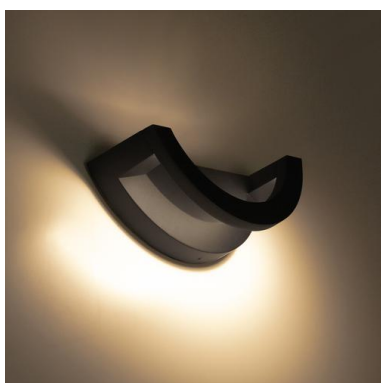
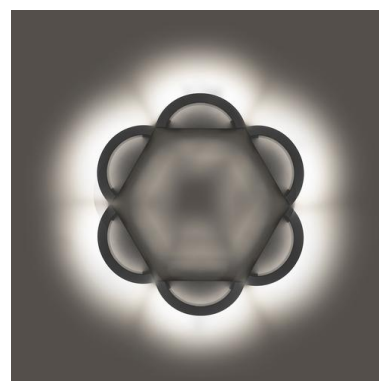
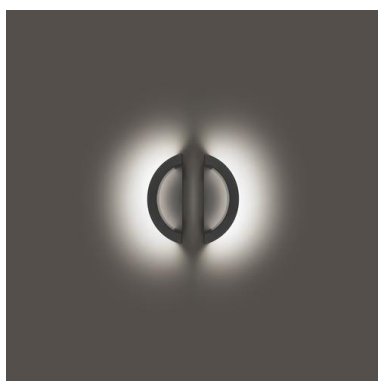
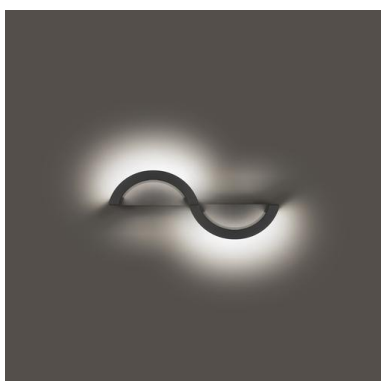
Dimensions	Length x Height x Width (mm): 204 x 81 x 78
IP	IP65
IK	08
Protection class	Class I
Frequency	50/60 Hz
Input voltage	110-240V AC V
Output current	120 mA
Power factor	0.9
Auxiliary gear	Electronic
Operating temperature range	-20 - 45 °C
Lifetime	50,000 h
LED lifetime L	70
LED lifetime B	50
Weight	0.51 Kg
Cable outlets	2
ECORAAE category I	LED-B
ECORAAE I	0.4



LOOP

982A-L3109A-02 Wall Bracket LOOP IP65 LED SMD 9.50W 1295lm CRI80 3000K 50° Black

COMPLEMENTARY IMAGES



PRODUCTS OF THE SAME FAMILY



Loop H1000



Loop H500