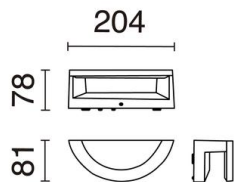
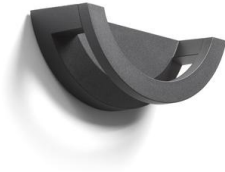


LOOP

982A-L3309A-02

Wall Bracket LOOP IP65 LED SMD 9.50W 1405lm CRI80 4000K 50° Black



Family wall light and exterior beacons, made of aluminum and black finish. With an indirect light distribution and equipped with high degrees of protection IP65 and IK08 and, it is available at two color temperatures 3000K and 4000K. The wall lamp can be installed individually or in a group to create luminal shapes and designs. The beacon is available in two heights of 500mm and 1000mm. With an attractive and modern design this family provides functional and aesthetic lighting, for any external, residential or commercial space.

GENERAL DATA

Category	Surface
Family	Loop
Finish	[02] Black
Location	Outdoor
Installation	Wall
Body material	Aluminum
Diffuser material	Opal polycarbonate
ETIM class	EC0028g2
EAN	8433264115586

LIGHT SOURCES AND BEAMS

Sources	LED SMD 9,5W max. 1405lm 4000K CRI80
Total flux	535 lm
Energy efficiency	D
Beam	50° - Indirect asymmetric

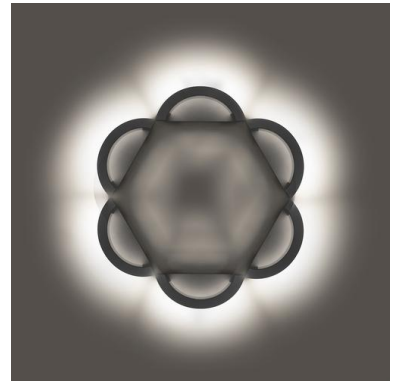
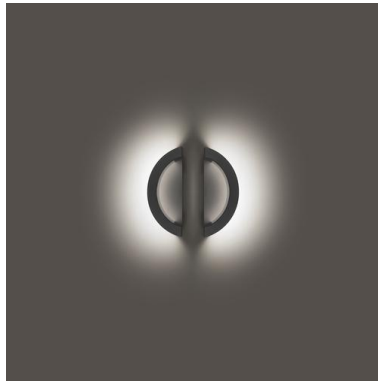
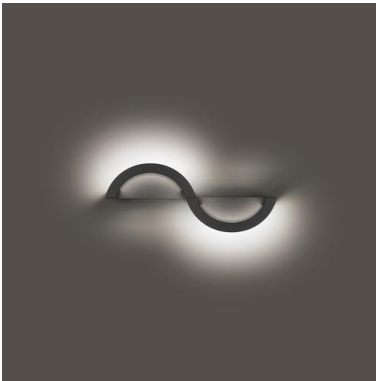
TECHNICAL DATA

Dimensions	Length x Height x Width (mm): 204 x 81 x 78
IP	IP65
IK	08
Protection class	Class I
Frequency	50/60 Hz
Input voltage	110-240V AC V
Output current	120 mA
Power factor	0.9
Auxiliary gear	Electronic
Operating temperature range	-20 - 45 °C
Lifetime	50,000 h
LED lifetime L	70
LED lifetime B	50
Weight	0.51 Kg
Cable outlets	2
ECORAE category I	LED-B
ECORAE I	0.4



LOOP 982A-L3309A-02 Wall Bracket LOOP IP65 LED SMD 9.50W 1405lm CRI80 4000K 50° Black

COMPLEMENTARY IMAGES



PRODUCTS OF THE SAME FAMILY



Loop H1000

Loop H500