


FLOS

 F1070039 Green

Bellhop Floor

Designed by Edward Barber and Jay Osgerby, 2020

26W - 1023lm - 2700K - CRI> 90



Floor lamp with indirect light. Stem in painted aluminium: shiny white, brick, cioko, green. Reflector in shiny opal white and grey blown glass. Electrical cable of 270 cm usable length with foot dimmer switch for ON/OFF function and brightness adjustment 10–100%. Power supply with interchangeable plugs.

Are you a professional and your project needs consulting and support?

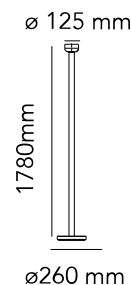
[BOOK AN APPOINTMENT](#)

Main specifications


EAN	8059607039724
Mounting	Floor
Environments	Indoor dry location
Light source type	LED
Light sources included	Yes
LED type	LED array
Power (W)	26
System power (W)	26
Lumen Output (lm)	1023

Physical

Colour	Green
Length (mm)	260
Cord colour	Black
Cord length (mm)	2700
Net weight (kg)	9.82
Package volume (m3)	0.05
IP internal	20



Download

[Mounting instructions](#)  PDF

[Mounting instructions](#)  PDF

Photometric Files

[LDT / IES](#)  LDT

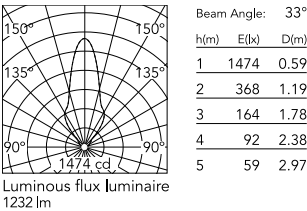
Technical Drawings

[3D](#)  ZIP

[Bim](#)  ZIP



Schematic light drawing



Photometric


Lighting type	Indirect
Light distribution	Roto symmetric
CCT (K)	2700
CRI>	90
Extreme cut off	No

Electrical

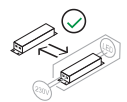
Insulation class	III
Frequency (Hz)	50/60
Main voltage (Vac)	100-240
LED current (mA)	700
Power supply	Remote included
Dimmable	Yes
Power supply type	Electronic 48V
Dimming interface	Switch Integrated (Remote Dimmable)
Plug type	Type G, Type A, Type C
Batteries inside	No

Ecodesign and Energy Labelling

This product contains a light source of energy efficiency class **G**

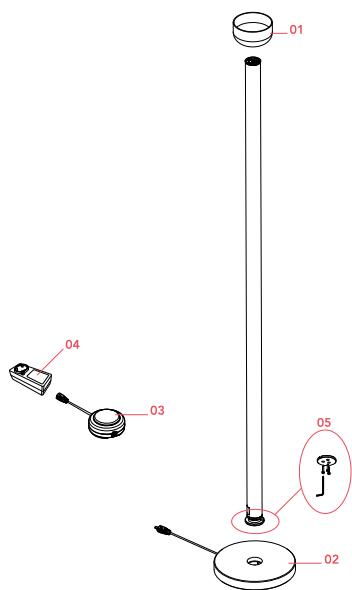


Replaceable (LED only) light source by a professional



Replaceable control gear by an end-user

Spare Parts

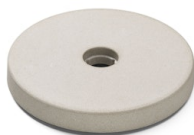


01.	Bellhop Floor Reflector White	F1073009
02.	Bellhop Floor Base Concrete	F1072009
03.	Bellhop Floor Switch Dimmer Assembly 700mA	RF30216
04.	Black plug assembly kit & 48V driver	RF6600130
05.	Bellhop F Kit screws for base	RF1070100



F1073009

Bellhop Floor Reflector White



F1072009

Bellhop Floor Base Concrete



RF30216

Bellhop Floor Switch Dimmer
Assembly 700mA



RF6600130

Black plug assembly kit & 48V
driver



RF1070100

Bellhop F Kit screws for base